

## KEY INFORMATION FACTSHEET



### First Response Team(s)

The First Response Team (based within the MAST) are responsible for responding to a referral about a child/young person or member of their family. These teams are located within the three geographical service areas: North, East and West. Social Workers for Prevention and Intervention and Duty Team Managers work within these teams.

These teams take responsibility for:

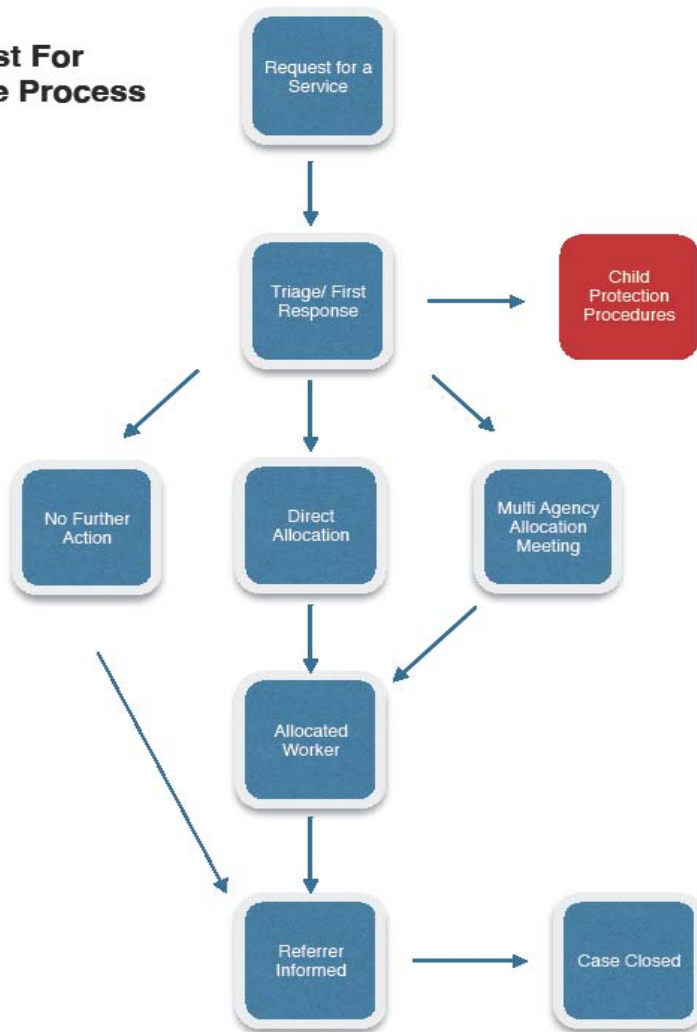
- Providing advice and guidance in response to contacts/referrals from other professionals;
- Identifying whether a child and family can be supported through existing local services, enhanced supportive work through MAST or it's Partners, or a more detailed assessment is required;
- Identifying any immediate Child Protection Concerns that may require a social work assessment;
- Responding to requests for service summaries (Initial or Core Assessments) from Social Care for a child or family as part of a jointly worked plan or exit strategy from Social Care services.

Full guidance on the First Response Team process is available at <https://www.sheffield0to19.org.uk/masts>

If you wish to request a service from MAST or its partners please complete a Request for Support Form or a Common Assessment Framework (CAF) or contact us.



## MAST Request For Service Process



## Contact Details:-

### North MAST

Watermead  
Barrie Crescent  
Sheffield  
S5 8RJ

**Tel** 0114 2331189

**Fax** 0114 2331042

**Team Email:**

[NorthMAST@sheffield.gov.uk](mailto:NorthMAST@sheffield.gov.uk)

### East MAST

First Floor, Shortbrook Primary Site  
Westfield Northway  
Westfield  
S20 8FB

**Tel** 0114 205 3635

**Fax** 0114 205 3639

**Team Email:**

[EastMAST@sheffield.gov.uk](mailto:EastMAST@sheffield.gov.uk)

### West MAST

Old Sharrow Junior School  
South View Road  
Sheffield  
S7 1DB

**Tel** 0114 250 6865

**Fax** 0114 250 6713

**Team Email:**

[WestMAST@sheffield.gov.uk](mailto:WestMAST@sheffield.gov.uk)